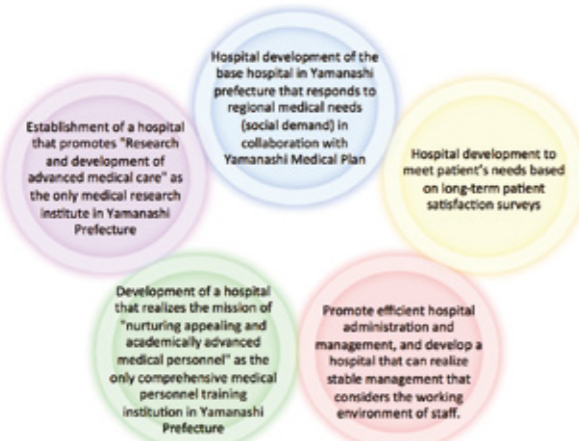


At the University of Yamanashi Hospital, hospital redevelopment projects have been launched in order to improve facilities for the latest medical care and to accelerate efforts for the enhancement of acute care and advanced medical care as the only advanced treatment hospital in the prefecture. Our aim is to become the core of medical care in Yamanashi Prefecture, which delivers "safety" to all patients, and to realize a society free of people suffering from illness.



Basic philosophy of hospital redevelopment

Promotion of medical cooperation in Yamanashi prefecture centered on the university hospital



Strengthening of surgery departments (providing high-performance surgery)

Expansion of the number of operating rooms and floor space

We have increased the number of operating rooms by two, and have expanded the area per operating room. At the same time, the MRI Operating Room (the first 3 tesla movable type in Japan), the Hybrid Operating Room, and the operating room using the medical robot (da Vinci) for Endoscopic Surgery, were prepared and anticipated by our hospital. We have created an environment where we can provide cutting-edge and advanced medical care.



[Hybrid operating room]

[MRI operating room]

Ward design considering education and training

We are creating conference rooms and securing bedside space for clinical training in order to nurture advanced medical personnel.



[Development of an education and training environment by creating conference rooms and expanding bedside space]

The First Stage Bldg.

[Starting operation of the First Stage Bldg.]

The New Ward (first stage), which was completed at the end of June 2015, had a half-year preparation period, and the opening ceremony was held on December 6th of the same year. On December 26th the number of beds on the ward was increased to 368. Departments have been moved from the existing ward and operations have begun.

[Structure outline the First Stage Bldg.]

- Building area : 4,075.57㎡
- Total floor space : 20,916.40㎡
- Structure : Reinforced concrete construction (seismic isolation structure) 7 levels above ground (with rooftop heliport)
- Number of bed : 368 beds (total: 618 beds)



[A heliport with specifications that can be landed by a disaster prevention helicopter and Doctor Helicopter]



[Completed First Stage Bldg.]

The Second Stage Bldg.

Completion of the Second Stage Bldg.

Construction of the New Ward (second stage) has been completed, and the ward opened in October 2020.

The special features of the Second Stage Bldg. are, an Admission and Discharge Support Center, a negative pressure room with separate flow lines on each floor, RI patient rooms on the second floor, a hospital school and play room on the fourth floor, and on the seventh floor we plan to maintain a sterile room with nursing functions and a special room capable of holding 4 beds.

[Structure outline the Second Stage Bldg.]

- Building area : 2,138.85㎡
- Total floor space : 13,548.62㎡
- Structure : Steel Construction (seismic isolation structure) 7 levels above ground
- Number of beds : 250 beds (total: 618 beds)



[Completed Second Stage Bldg.]

Ward development that reflects patient's satisfaction surveys

Based on the results of an inpatient satisfaction survey conducted by our hospital for many years, the hospital can meet the needs of patients by expanding the effective space in the day rooms, making use of facilities around the toilets and wash areas, and improving the private rooms. We are responsible for carrying out all maintenance.



[day room]



[private room]

Central Clinical Service Bldg./Special Clinical Care Bldg.

Completion of Renovation Works for the Central Clinical Service Bldg./ the Special Clinical Care Bldg.

The renovation work of the Central Clinical Service Bldg. and the Special Medical Care Bldg. has been completed in October 2022. Starting with the construction of the RI examination rooms and central elevator, we expanded the Department of Clinical Laboratory, the Division of Transfusion Medicine and Cell Therapy, the Blood Purification Center, the Department of Endoscopy, the Division of Rehabilitation, Obstetrics and Gynecology outpatient examination rooms, etc. one after another.

For each department, we aim to provide a better medical care environment by expanding the medical treatment space and preparing the waiting space.



[Blood Sampling Room]



[Endoscopy Room]

Expansion and renovation of the Division of Rehabilitation.

In July 2022, the Division of Rehabilitation relocated to the Central Clinical Service Bldg. and started operation.

It is primarily divided into three areas: a physical therapy room, a cardiac rehabilitation functional training room, and an occupational therapy room, providing a safe environment for medical care with full equipment and large spaces.



[Physical Therapy Room]



[Cardiac Rehabilitation Function Training Room]



[Occupational Therapy Room]

Obstetrics and Gynecology outpatient examination rooms /Center for Reproductive Medicine and Infertility

Expansion of examination rooms, waiting rooms, etc.

In November 2022, the Obstetrics and Gynecology outpatient examination rooms were relocated to the Special Clinical Care Bldg., and in February 2023, the Center for Reproductive Medicine and Infertility also moved to the same location, commencing its operation.

Furthermore, spacious examination rooms, private consultation rooms, and partitioned waiting areas have been developed to ensure patient privacy and provide a safe and comfortable environment.



[Waiting Room]



[Examination Room]

The Clinical Support Bldg.

Completion of the Clinical Support Bldg.

The construction of a new ward (third stage) has been completed in February 2023. The administration department located in the Outpatient Bldg. and the Central Clinical Service Bldg. has been consolidated in the Clinical Support Bldg.

In particular, we will improve the patient flow line and strengthen the medical support function by expanding the Department of Pharmacy and the Department of Clinical Engineering, which are the medical care support facilities. The Department of Quality and Patient Safety and the Division of Infection Control and Prevention has been relocated closer to the wards to provide safe medical care to patients.

[Structure outline the Clinical Support Bldg.]

- Building area: 1,469.00㎡
- Total floor space: 7,951.63㎡
- Structure: Steel Construction (seismic isolation structure) 7 levels above ground (seismic structure) 4 levels above ground



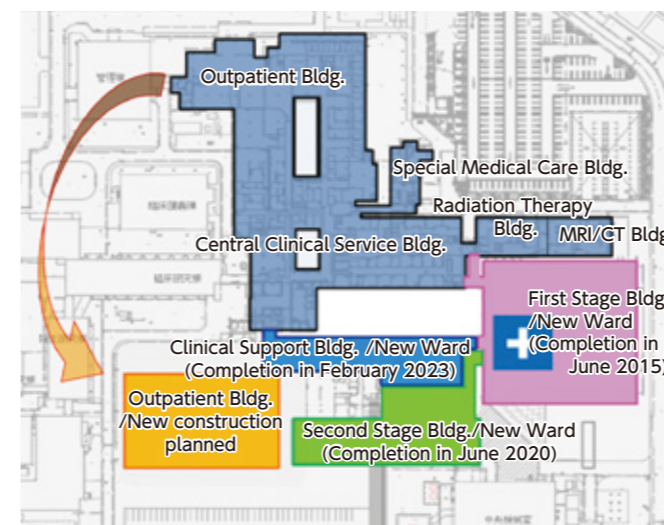
[Completed Clinical Support Bldg.]

Future Hospital Redevelopment Projects

Promote the Redevelopment Projects Plan with the aim of further enhancing hospital functions

In the Redevelopment Projects Plan, the construction of the Clinical Support Bldg (Phase III) has been completed in February 2023, and the reconstruction of the Outpatient Bldg. is planned for the future.

We will build an infrastructure that will enable hospital management to run smoothly, for the next 30 years.



[Diagram of the Redevelopment Projects Plan] (Underlay shows the existing facilities)

Redevelopment Projects Plan

